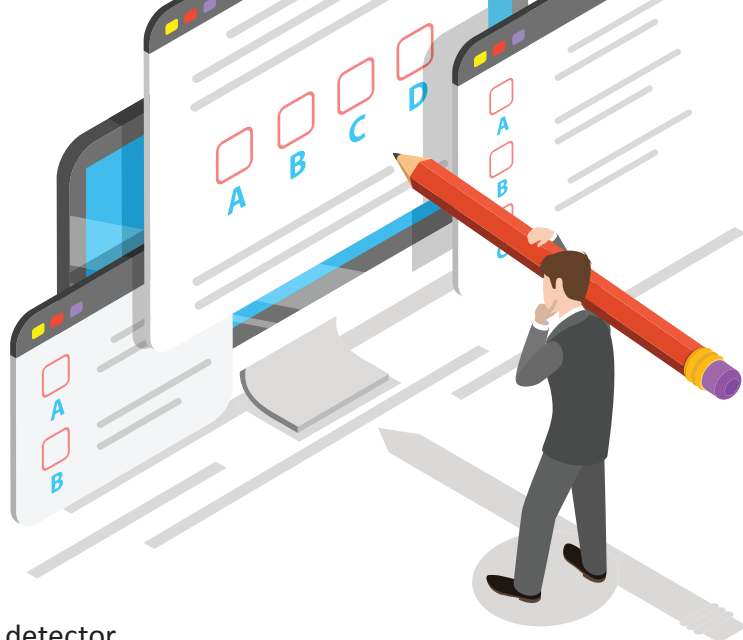




# RADON TEST INSTRUCTIONS: QUICK START GUIDE

(see more detailed instructions on reverse)



## THANKS FOR JOINING THE 100 TEST KIT CHALLENGE!

1. **PICK** a room and a location in your home and **PLACE** your detector.
2. **OPEN** the foil test kit package and **RECORD THE DATE** on the test kit envelope. **ONCE THE PACKAGE IS OPEN, THE DETECTOR IS ACTIVE.** Keep the envelope **ON YOUR FRIDGE** (or in a convenient location) until you have received your test results from the lab.  
*(Dispose of the used foil package and keep the new foil package in the envelope to return the detector after testing is complete)*

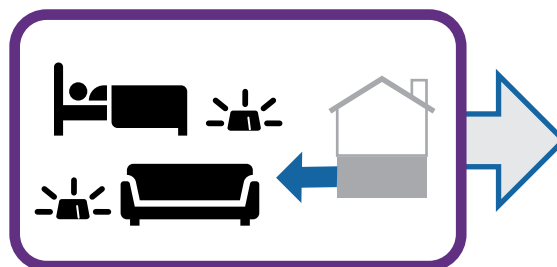
3. Log on to [www.radontestkitchallenge.ca](http://www.radontestkitchallenge.ca) and complete the **START SURVEY**.
4. Leave the detector in place for the next 100 days to complete measurement.

**On the date you are ready to drop the detector off at the Community Collection location:**

5. Complete the online **END** survey and **RECORD** the date on the test kit envelope.
6. **RETURN** the detector to the Community Collection Point location listed on your envelope.



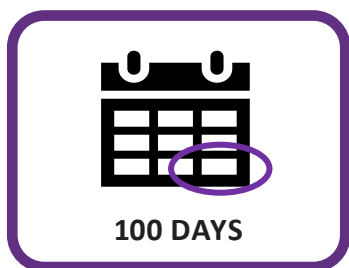
1. **OPEN** the foil package and remove detector.



2. **PICK** a room and **PLACE** the detector beside a bed or couch in the lowest "lived-in" level of your home.



3. Go to [radontestkitchallenge.ca](http://radontestkitchallenge.ca) and complete the **START SURVEY**.



4. Leave in place **100** days.



5. Log on and complete the **END SURVEY**.



6. **RETURN** detector in the new foil package to your Community Collection Point listed on your envelope.

# DETAILED RADON TEST INSTRUCTIONS

## - AND REFERENCE SHEET

### SETTING UP AND ACTIVATING YOUR DETECTOR

1. **PICK** a room: The radon detector should be placed in a room such as a basement bedroom, office or playroom. If the basement is not used 4 hours a day or more, then choose a room on the main floor where you spend an average of at least 4 hours per day. Radon levels are generally highest in lower levels of your home.
2. **OPEN** the test kit package: your detector is now active and ready to use. Please complete the information on the brown envelope and store the envelope on your fridge or in another convenient location until you receive your radon test results from the lab at the end of the program.
3. **PLACE** your detector on a table or shelf beside a bed or couch. Keep it away from windows, fans and vents, and off of the floor (*see image for details*)
4. **COMPLETE** the online **START SURVEY**. Enter your contact information and start date and complete the launch survey at: [www.radontestkitchallenge.ca](http://www.radontestkitchallenge.ca)

**Good locations include:** Basement bedrooms, family rooms or offices; ground-level family rooms, living rooms, dens, playrooms and bedrooms. A bedroom is preferred because people generally spend more time in their bedrooms than in any other room in the house.

**DO NOT** place the detector in crawl spaces, kitchens, bathrooms, laundry areas, furnace rooms, or closets.

*Enjoy the next 100 days. If you have provided us with your email address in the Start Survey, we will send you a reminder email about the upcoming collection period. Please contact us if you haven't received an email from us.*

At the end of the testing period (after 100 days):

5. **COMPLETE** the **END SURVEY** online. Log in to [www.radontestkitchallenge.ca](http://www.radontestkitchallenge.ca) to register the end date of the measurement period and complete the last few questions of our survey.
6. **RETURN** the detector by dropping it off to your Community Collection Point **at the address on your envelope**.

*If your detector is NOT returned during the drop off period, you will be responsible for the cost of mailing it to the lab for analysis. Mail to: Take Action on Radon, 4 Donald McClintock Bay, Winnipeg, MB R2G 3N3*

### Detector Placement: **Minimum** Distance From Room Features

